

# Fitzroy North House

**Fitzroy North, Victoria, Australia**

Nic Owen Architects

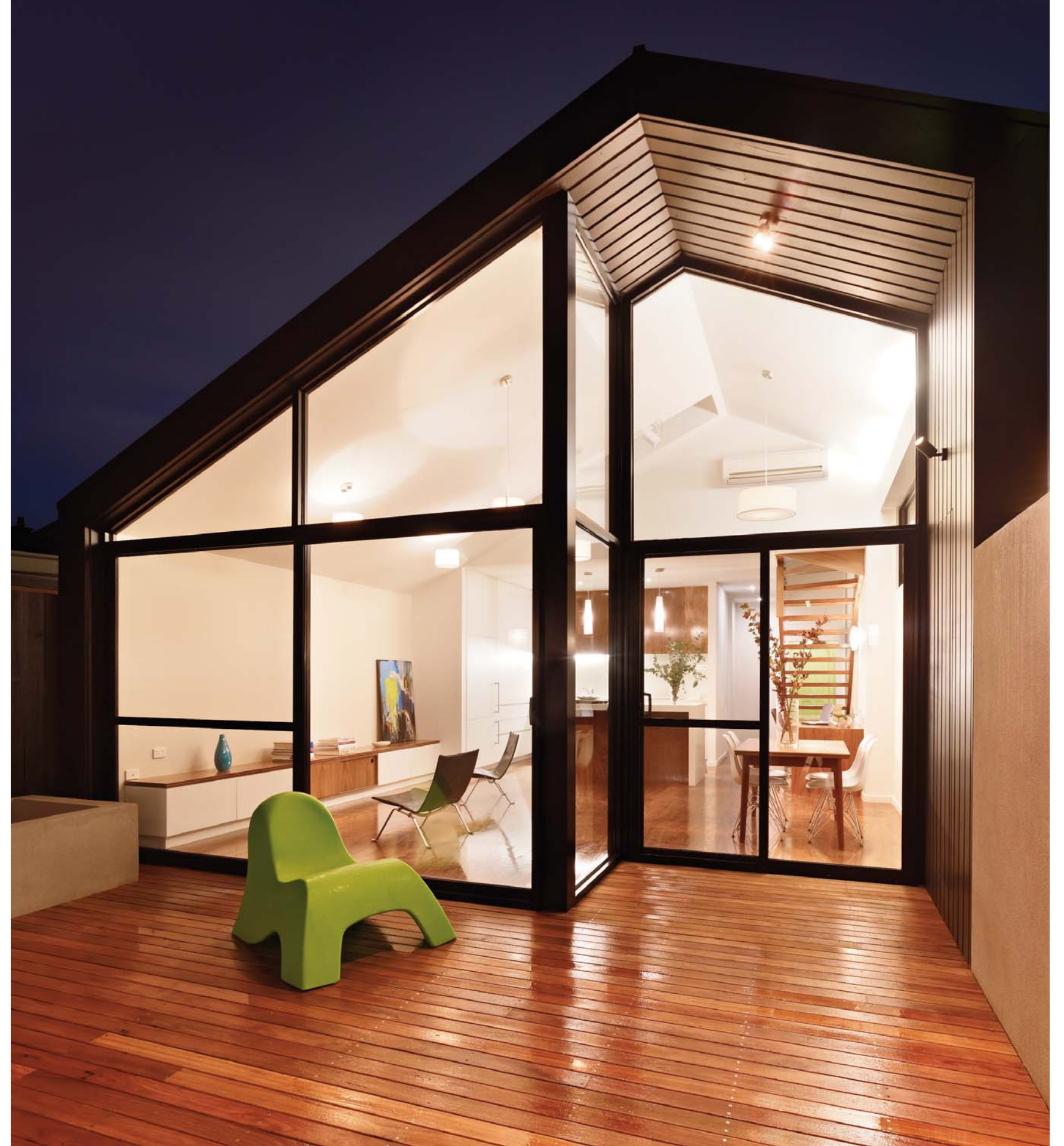
Photography: Rhiannon Slatter

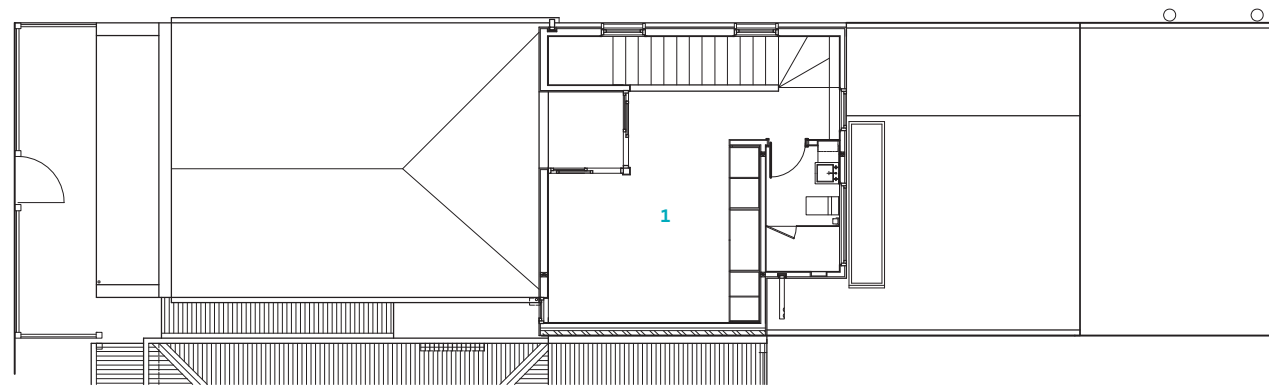
This renovation is located on a small site in North Fitzroy with tight planning and heritage controls and a challenging orientation. The owners of the small Victorian terrace approached the architects with a brief to create a larger house with a bright and airy feel to cater for their growing family.

A modern glass structure wrapped in a timber skin formed the shell of the extension, providing light and vertical space while maintaining the south neighbour's access to light. New works are recessive and

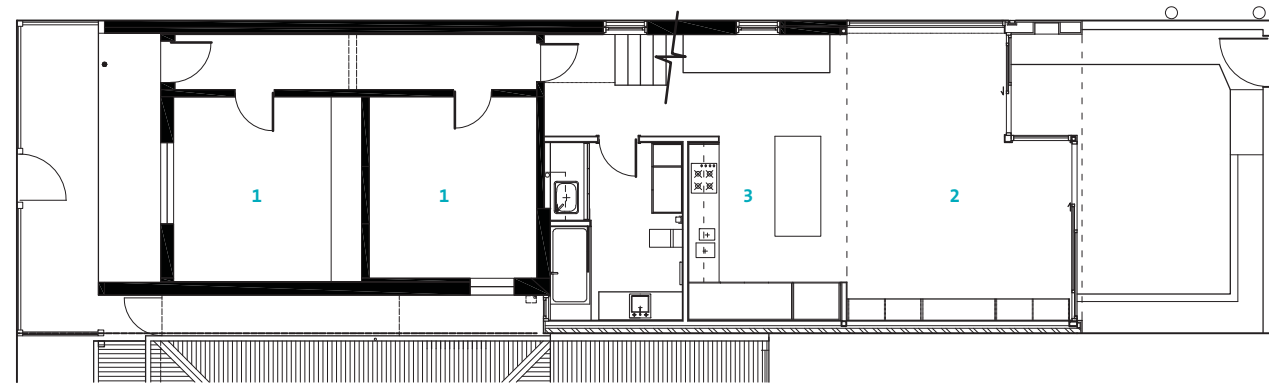
respectful, and complement the historic setting. Full-height windows with fixed metal blades on the north laneway provide privacy from within and allow winter sunlight to enter through an open glass and timber stairwell. Large skylights add to the sense of space and light. North-facing roofs accommodate photovoltaic cells and solar hot water panels, and plantation timbers have been used throughout.

This three-bedroom inner-city residence on a small site offers a sympathetic response to historically sensitive inner-city living.





First floor



Ground floor

- 1 Bedroom
- 2 Living
- 3 Kitchen

