

# Carlton House

Carlton, Victoria, Australia

Nic Owen Architects

Photography: Rhiannon Slatter

This addition is located on a very small site at the rear of an existing Victorian terrace in lively Carlton. The solution was a modern addition which, while reading as visually separate to the existing building, does not overpower or compromise the integrity of the small worker's cottage.

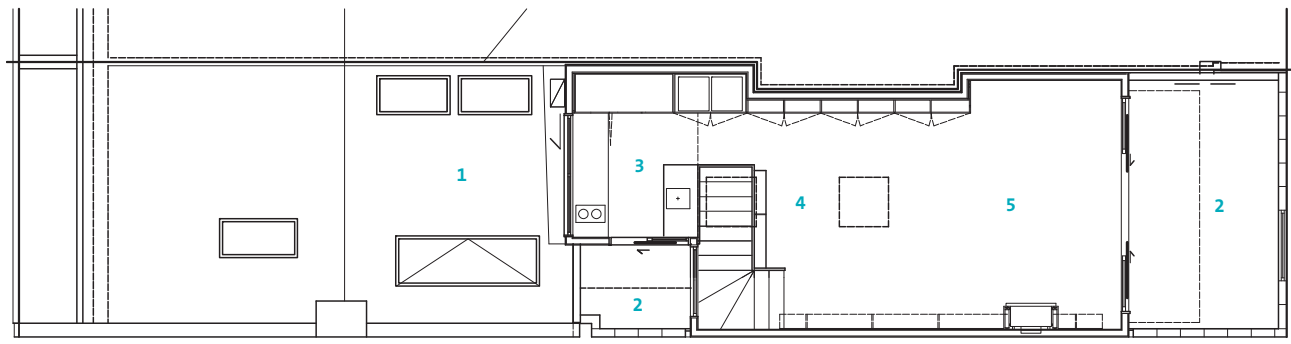
The use of stacked concrete blocks for the addition links the new building to the cobblestones seen in the laneways wrapping around the site and bluestone base of the existing cottage. The materials palette has been limited to the use of concrete, a ribbon of form-ply which grounds the house while discretely hiding the garage door,

vertical spotted gum timber cladding and black aluminium windows and doors.

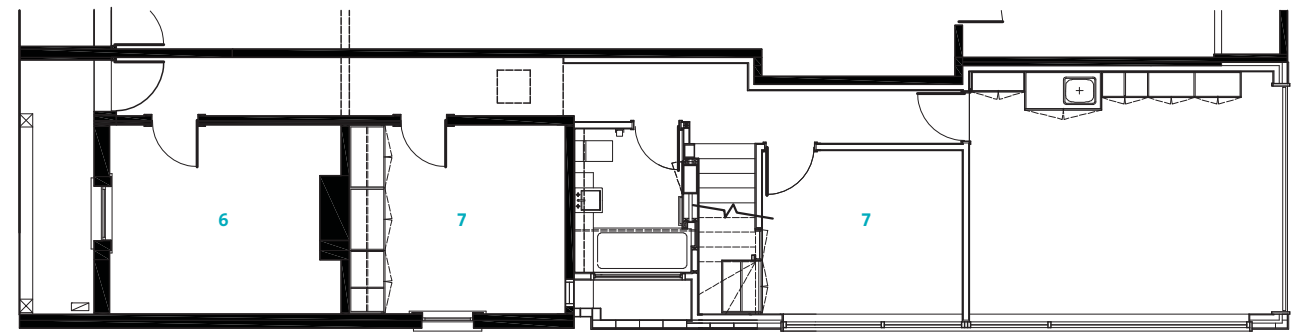
Critical to the brief was the ability to accommodate more private living space, reducing noise in the existing building and incorporating a multipurpose room which doubles as a garage or a second living room in the future. In a further effort to use all available space, the roof space in the existing cottage was fitted out to create an artist's studio.

This three-bedroom residence on a small inner-city site offers an environmentally responsible solution to compact sustainable living.





First floor



Ground floor

- 1 Studio
- 2 Balcony
- 3 Kitchen
- 4 Meals area
- 5 Family room
- 6 Office
- 7 Bedroom

